

# PERUNDING TRAFIK KLASIK

TRANSPORTATION PLANNING &  
TRAFFIC MANAGEMENT



*Providing Traffic & Transport Consultancy Services since 1994*



Learn more about us here:

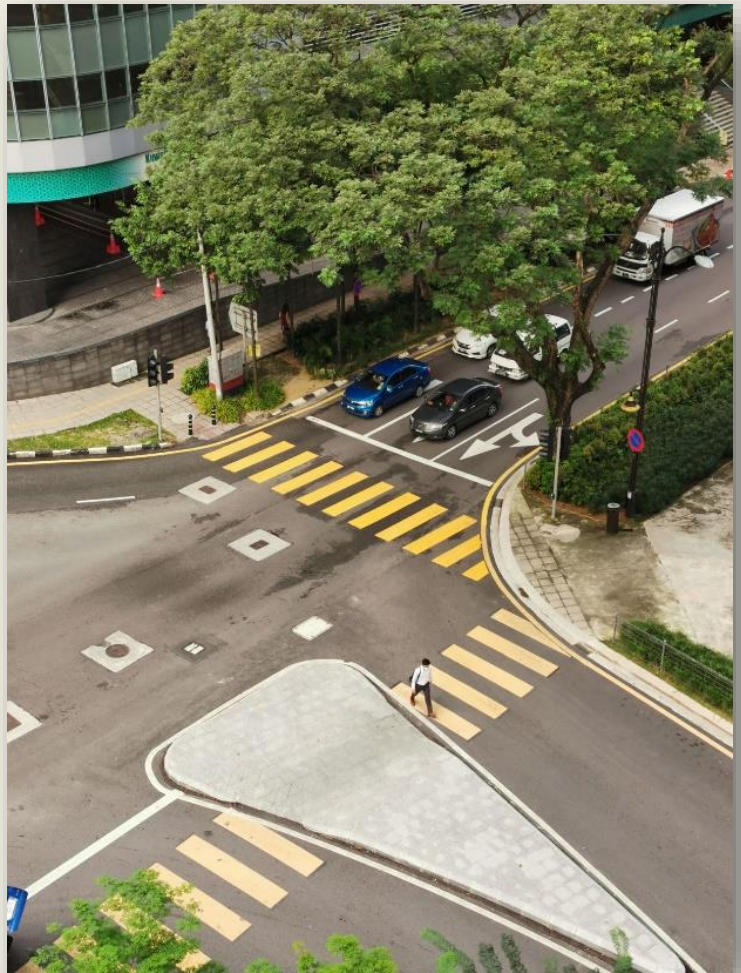
[www.ptk.my](http://www.ptk.my)  
[trafik@ptk.my](mailto:trafik@ptk.my)  
+603 7932 3266

2025

# About Us

Perunding Trafik Klasik (PTK) Sdn Bhd is a Transportation Planning & Traffic Management Consultancy in Malaysia. PTK draws its expertise and skills from the collective knowledge, experience, and commitment of a team of professional transport planners and traffic engineers.

Our philosophy is to ensure an effective blending of our transportation planning knowledge and expertise with the deployment of advanced computing facilities and software for the success of our projects.



Perunding Trafik Klasik (PTK) was founded by Dr. Tai Tuck Leong in 1994, and since then it has grown from a company of five to an organisation of close to 30 personnel and has become a leading Transportation Consulting firm in Malaysia.

The PTK team is well qualified academically and has widespread exposure to the state-of-the-art technology through post-graduate studies, research, conference attendance etc. The team consists of a Chairman with a PhD degree, three with M.Sc in Transport Planning, one with an M.Phil in Economics, and the others with either Civil Engineering or a Town Planning degree. Since its inception in 1994, the team has propelled PTK to become a dynamic and foremost consultancy in transportation planning in this country.





## Our Vision

Traffic engineering focusses on the traffic and transport solutions to best facilitate movement of traffic and people. PTK offers more than 25 years of experience on traffic and transportation solutions from small to large scale development projects.

Our Vision is to provide a systematic and strategic approach in traffic problem solving while embracing the changing mobility landscape focusing more on public transportation and urban mobility.

A balanced approach between motorised and non-motorised forms of transportation must be a priority to enhance the livability of any development. This can only be achieved by giving the right amount of priority to each mode of transport and understanding the concept of shared space for all forms of transport.

# What We Do?

Members of the team have extensive local and international experience in transport planning, traffic management, transport information system technology, transport project economic analysis, and highly technical and advanced computing skills. We have excellent local knowledge of the transportation sector in Malaysia and a comprehensive appreciation of the available transport database in the country.

We are constantly keeping abreast with developments in the Transportation and associated Information Technology disciplines to provide the best of services to all our clients. Our emphasis on professionalism, innovation and efficiency have ensured a continual growth in our stature and eminence in the country. And we have taken upon ourselves a mission to uplift the standard of transportation planning in the country which would lead to a more sustainable and people-oriented environment.



## Traffic Impact Assessment

Single plot development  
Traffic management plan (TMP) during construction  
Traffic circulation management



## Transport Masterplan Studies

Masterplan Development with Multiple Plots  
Local Area Transport Modelling  
Public Transport Planning  
Non-Motorised Transport Planning



## New Road & Highway Studies

Toll Volume Forecast  
Interchange Capacity and Design  
Traffic Impact Assessment on Highway Connections



## Public Transport Studies

Bus and Rail Ridership Forecast  
Traffic Impact Assessment on Transit Stations  
Traffic Layout Studies for Transit Stations  
Transport Modal Share Studies  
Transport Hub Studies



## Traffic Circulation Studies

Change & Closure of Traffic Circulation  
Traffic Management Schemes  
Internal Carpark Circulation & Boom Gate Analysis



## Strategic Studies

Strategic Local and Nationwide Transport Planning  
Central Business District Traffic Policies  
Evaluation of Transportation Projects



## Special Studies

Parking Studies and Analysis  
Trip Generation Studies  
Highway Capacity Studies  
Traffic Origin – Destination Studies



## 3D Traffic Simulation & Traffic Analysis Software

TRACKS Transport Modelling Software  
VISSIM Microscopic Traffic Simulation  
SIDRA Intersection and Network Analysis  
SWEEP Vehicle Swept Path Analysis

# We Deliver Our Best

Our traffic studies are specifically formulated for each study area and are guided by traffic study guidelines. The traffic studies will provide specific traffic analysis as and when needed.

## **Traffic Study Guidelines and References**

Arahan Teknik Jalan (ATJ) 38/2018: Guidelines to Traffic Impact Assessment (TIA)  
REAM GL 10/2011 Guidelines for Traffic Impact Assessment  
Malaysia Highway Capacity Manual (MHCM) 2006 & 2011  
Road Traffic Volume Malaysia (RTVM)  
Various Arahan Teknik Jalan (ATJ) and local authority guidelines related to traffic design

## **Traffic Impact Assessment Study**

Traffic volume counts  
Internal and external traffic circulation  
Optimal junction configuration recommendations  
Traffic impact analysis from development generated traffic volume  
Pedestrian and public transport facilities recommendations  
Carpark and service vehicle circulation and swept path analysis

## **Transport Masterplan Study**

Traffic volume counts  
Road alignment & hierarchy proposal  
Road network planning for the study area  
Traffic model building and analysis  
Optimal junction configuration recommendations  
Traffic option testing for phased development  
Traffic impact analysis from development generated traffic volume  
Pedestrian and public transport facilities recommendations  
Preliminary plot access suggestions

## **Road and Highway Study**

Traffic volume counts & travel time survey  
Preliminary desktop traffic forecasting  
Traffic model building and analysis  
Traffic impact assessment on highway interchanges  
Strategic toll charging proposal and toll booth recommendations.  
Peak hour & daily traffic volume forecast including revenue forecast

## **Public Transport Study**

Traffic volume counts & journey time survey  
Preliminary desktop traffic forecasting  
Traffic model building and analysis  
Traffic impact analysis and traffic circulation study on rail stations  
Peak hour and daily ridership projections  
Park and ride recommendations  
Feeder bus service route recommendations  
Modal split analysis and result

# Our Experience

## NATIONAL LEVEL

National Physical Plan 1 & 4 - Transport

East Coast Rail Link (ECRL) – Ridership

Mid Speed Train Service between  
Padang Besar and Johor Bahru

Southern Economic Spine Study – Transport

Ridership Review of Rapid Transit System Link between  
Johor Bahru & Singapore

Rapid Transit System Link TIA



# Central Region

## Traffic Impact Assessment Studies

Bangsar South Traffic Dispersal Study  
 KL Wellness City (KLWC), Bukit Jalil  
 Riviera Bangsar Mixed Development, Bangsar  
 Vanke (Bukit Nenas) Development, Kuala Lumpur  
 Plaza Rakyat Redevelopment, Kuala Lumpur  
 Cyberjaya 8 / Angkasa Icon City, Cyberjaya.  
 Pavilion Damansara Town Centre (DTC), Kuala Lumpur  
 Jalan Stonor Development and Plot Ratio Study, KL  
 MVV (Hamilton Plot 4,5 &6)  
 Ibu Pejabat Polis Klang  
 Columbia Hospital Expansion, Klang  
 Tenaga Nasional Berhad HQ, Bangsar  
 Dataran Merdeka Heritage Area

## Transport Masterplan Studies

Kwasa Damansara, Petaling  
 Tun Razak Exchange, Kuala Lumpur  
 KL Eco City, Kuala Lumpur  
 Malaysia Vision Valley, Negeri Sembilan  
 Setia Federal Hill, Bangsar  
 Garden City, Kuala Lumpur  
 Bukit Jalil City Centre, Bukit Jalil  
 W City OUG, Kuala Lumpur  
 Subang Skypark Terminal, Subang  
 Taman Wahyu Development, Kepong  
 Bukit Bintang City Centre, Kuala Lumpur

## Strategic & Special Studies

Traffic Dispersal Project for Jalan Tun Razak  
 Signage Study Duke Phase 2 Expressway  
 Signage Study for KL Sentral  
 Circulation Study for Law Yat Development in Bukit Bintang  
 Study on the Closure of Jalan Bukit Bintang during Events  
 Study for the Relocation of  
 Express Bus, Taxi Waiting Area at KL Sentral  
 Malaysia Vision Valley Interchange Study, Negeri Sembilan  
 TIA on the TMP for Setiawangsa Pantai Expressway  
 Study on the connection between Bamboo Garden  
 Development and DUKE  
 Internal Circulation for Sqwhere Development, Sg. Buloh



## Kuala Lumpur, Selangor, & Negeri Sembilan

## Privatised Highway Studies

Maju Expressway (Phase 1 & 2) review  
 Duta Ulu Kelang Expressway (DUKE)  
 Sri Damansara Link (SDL)  
 Tun Razak Link (TRL)  
 Setiawangsa Pantai Expressway (SPE)  
 DUKE Phase 2a  
 East Klang Valley Expressway (EKVE)  
 Lebuhraya Shah Alam (KESAS)  
 Guthrie Corridor Expressway (GCE)  
 Lebuhraya Kemuning Shah Alam (LKSA)  
 Ampang Elevated Highway (AKLEH)  
 Kajang Dispersal Link Expressway (SILK)

## Public Transport Studies

Subang Airport Regeneration Plan – Traffic Study  
 Trial Bus Lane Implementation at Jalan Ampang  
 TIA Study for:  
 Klang Valley MRT3 (Circle Line)  
 Shah Alam LRT Line (LRT3)  
 Ampang & Kelana Jaya LRT Line Extension  
 Ridership Study for:  
 MRT3 (Circle Line) Feasibility Study  
 Johor Bahru LRT  
 East Coast Rail Link (ECRL)  
 Shah Alam LRT Line (LRT3)  
 Sunway Bus Rapid Transit (BRT)  
 KL Monorail Extension  
 Putrajaya Monorail  
 Proposed Study of Bus Routing Integration  
 System in Klang Valley

# Northern Region

## Traffic Impact Assessment Studies

Setia Fontaines, Bertam  
Private Hospital, Bertam  
Kg. Selamat Industrial Park  
Spirit of Perai Residential Developments, Sg. Dua  
KDU College, Batu Kawan  
Penang Designer Village, Batu Kawan  
Osram Factory, Batu Kawan  
IKEA, Batu Kawan  
Gudang Motorsikal MForce, Batu Kawan  
Eco Meadows, Bukit Tambun  
Intel Factory, Bayan Baru  
Setia Green, Bayan Lepas  
Intel Kulim High Tech Park  
Al-Bukhary Higher Learning Centre, Alor Setar  
Universiti Teknologi Petronas, Perak



## Penang, Perlis, Kedah, & Perak

## Transport Masterplan Studies

Batu Kawan Township Masterplan  
Butterworth Reclamation Development  
Penang Sentral Development  
Straits Trading Development, Butterworth  
ASPEN Development, Batu Kawan  
Utropolis, Batu Kawan  
Queensbay Mall Development, Bayan Baru  
Immigration, Customs, and Quarantine Complex,  
Bukit Kayu Hitam  
Kuah Ferry Terminal, Langkawi

## Special/ Strategic Studies

Strategic Development Plan for Accelerating  
Economic Transformation in Perlis  
  
Penang Bridge 3rd Lane Widening  
  
Proposed Interchange Study for Batu Kawan  
on North South Expressway  
  
Traffic Forecast Review for Penang Bridge

## Privatised Highway Studies

Butterworth Outer Ring Road (BORR)  
Jelapang - Selama -Batu Kawan Highway (JELAS)  
Sungai Petani - Changkat Jering Expressway (SPACE)  
Northern Inland Corridor Expressway (NICE)  
Penang Outer Ring Road (PORR)  
West Coast Expressway Feasibility Study (WCE)

## Public Transport Studies

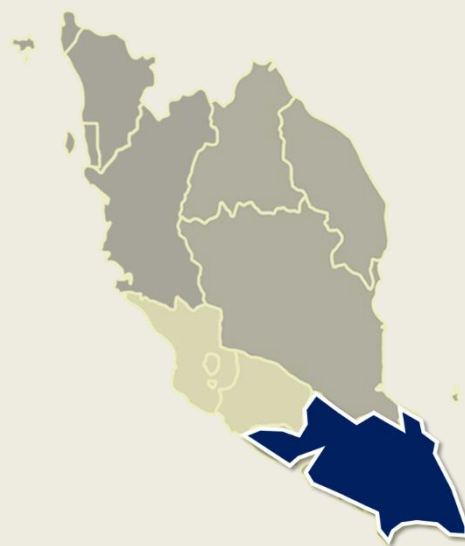
Ridership Study for Penang Monorail  
Ridership & TIA Study for Penang Sky Cab (Cable Car)  
Temporary Bus Hub for Penang Sentral



# Southern Region

## Traffic Impact Assessment Studies

Johor Golf and Country Club Development  
 South Key Megamall, Johor Bahru  
 Plaza Best World, Johor Bahru  
 Setia Tropika Square, Johor Bahru  
 JUSCO Bukit Indah  
 Setia Eco Gardens, Johor Bahru  
 Puteri Harbour, Nusajaya  
 Oil Terminal at Tanjung Langsat Port  
 TESCO Hypermarket, Kulai  
 Senai Transport Hub  
 R5 Regional Commercial Centre, Nusajaya  
 Biocity, Nusajaya  
 Nusajaya West Mixed Development



## Johor & Melaka

## Transport Masterplan Studies

Coronation Square  
 RTS TOD  
 Johor State New Administration Centre (JSNAC), Bandar  
 Nusajaya  
 Southkey Township, Johor Bahru  
 Lido Boulevard  
 Bandar Nusajaya  
 Danga Bay  
 Ledang District New Administrative Centre (LDNAC), Muar  
 Medini Township, Nusajaya  
 Senai Transport Hub

## Special/ Strategic Studies

RTS Interchange Study  
 Traffic Study on the TMP works for RTS project  
 Indahpura Overall Traffic Dispersal Study  
 Immigration, Customs, and Quarantine Complex,  
 Johor Bahru  
 Interchange Study for Perling Expressway  
 Interchange Study for Eastern Dispersal Link

## Privatised Highway Studies

West Coast Expressway (Muar - Gelang Patah)  
 Eastern Dispersal Link (EDL)  
 Senai Desaru Expressway  
 Lebuhraya Pantai Timur Fasa 4

## Public Transport Studies

Review of Rapid Transit System (RTS) Link  
 Ridership Study for Johor Bahru LRT  
 Johor Bahru Public Transport Masterplan Study for  
 UPEN  
 Permas Jaya Transport Hub

# East Coast Region

## Traffic Impact Assessment Studies

Hospital Temerloh

Manek Urai Petrol Station, Kuala Krai

Central Spine Road Package 2 – Gua Musang

Road Upgrading Study in Tok Bali

Road Upgrading and Widening from Sg Lakit to Gua Musang of Central Spine Road

Commercial Centre at Rantau Petronas, Kerteh

Traffic Management Plan for Signalised Junction J1 at Rantau Mall, Kemaman

Upgrading of the Existing Road from Sg Lembing to Junction of Kuantan Exit LPT, Kuantan

Development of Semi-D Vilas (438 units) and Service Apartments (3000 units) at Genting Sempah

Plot 1 (Parcel R1) Consists of Service apartment, a Part of Lot PT 23603, Mukim Bentong



## Kelantan, Terengganu, & Pahang

## Transport Masterplan Studies

Phase 2 Automotive Industrial Park, Pekan-Peram Palm Oil Industrial Cluster (POIC), Kuantan Port City

Concept Transport Masterplan Study for Proposed Development for Kuantan Waterfront, Kuantan

Transport Masterplan Study for Proposed Development for Parcel A - E, Kuantan

## Highway Studies

Central Spine Road between Kota Bharu and Gua Musang

## Special/ Strategic Studies

Kajian Rancangan Tempatan Daerah Marang (2007-2015), Terengganu

Traffic Circulation Study for East Coast Mall, Kuantan

Traffic Access Options Study for Proposed Kuantan Airport Site Location

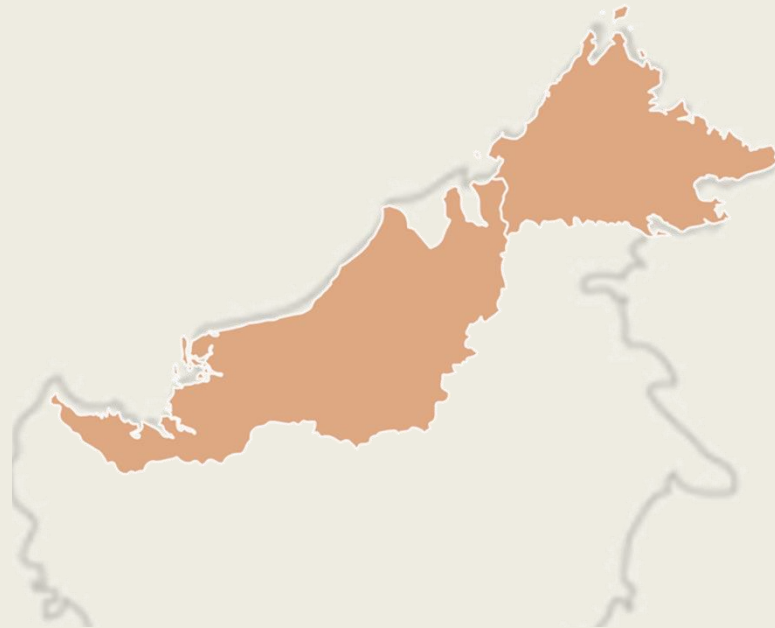
## Public Transport Studies

Ridership Study for East Coast Rail Link (ECRL)

# East Malaysia

## Traffic Impact Assessment Studies

1-Borneo Development  
Low-Cost Housing at Kampung Kalansanan, Inanam  
Karamunsing Kompleks  
Lot 2,3,5, and 6, Tanjung Lipat, Kota Kinabalu  
Sandakan Harbour Square Hotel  
TIA for Mukah Science Park  
Residential Development at Kg. Sinulihan, Inanam  
Condominium Development at Jalan Bukit Bendera,  
Kota Kinabalu



## Sabah & Sarawak

## Transport Masterplan Studies

Miri Urban Transport Action Plan  
Aeropod, Kota Kinabalu  
Lok Kawi Mixed Development, Kota Kinabalu  
Transport Masterplan Study for Tunoh  
Feasibility Study for Kuching Urban Transport Study  
Transport Masterplan for Kapit  
Lok Kawi Resort City, Sabah

## Special / Strategic Studies

Kota Kinabalu Environmental Improvement  
Masterplan - One Way Traffic System  
SUDP Study for Sustainable Urban Development  
Program for Sabah  
Car Parking Analysis for Kota Kinabalu - SUDP Study  
Traffic Review of Traffic System in Sibu Town  
Sustainable Urban Development Project (SUDP) for  
the Sibu Township  
Kajian Kebolehlaksanaan Projek Trans Borneo  
Railway

## Highway Studies

Traffic Study for Pan Borneo Highway, Sabah - Kota  
Kinabalu Outer Ring Road (KKORR)  
Pan Borneo Highway (Marudi – Lawas)  
Traffic Review of Tun Salahuddin Toll Bridge  
in Kuching  
Jalan Segama Northern Bypass (POIC), Lahad Datu  
Menaik Taraf Jalan Berungis (Laluan 503), Tuaran

## Public Transport Studies

Public Transport Masterplan Study for Kota Kinabalu,  
Tawau and Sandakan



# Our Registration

## Ministry of Finance

Registration Ref : 465-00000815

Industry Code : 340201 (Kajian Rangkaian Pengangkutan / Transport Planning)  
340202 (Kajian Trafik / Traffic Planning)

## Our Team



### Management

#### Ir Dr Tai Tuck Leong, Chairman

MIEM, P.Eng (PEPC)  
Ph.D. in Civil Engineering (Transportation), University of Canterbury, New Zealand, 1987  
B.Sc. in Civil Engineering with 1st Class Honours, Queen Mary College, University of London, 1978  
Years of Experience: more than 40 years

#### Ir Alex Chew Choon Aik, General Manager

MIEM, P.Eng (PEPC)  
B.Eng. – Civil, Queensland University of Technology, 2000  
Years of Experience: 24 years

#### Norashimah binti Yahaya, Deputy General Manager

M.Sc (Transport Planning), UTM, 1995  
Advance Diploma in Business Administration (Transport), UiTM, 1993  
Years of Experience: 29 years

#### Nor Rosmawati binti Razali, Manager (Project Planning)

B.Eng. (Hons) Civil, USM, 2007  
Years of Experience: 17 years

#### Dr Tan Swee Poh, Finance Advisor

Ph.D. University of Otago, NZ  
M.Sc. University of London, UK  
B.Sc. University of Nottingham



### Engineers & Planners

#### Siti Norrabihah binti Ramli, Senior Transport Planner

B. Urban and Regional Planning (Hons), UTM, 2010  
Years of Experience: 15 years

#### Nazatul Emma binti Danuri, Senior Traffic Engineer

B.Eng. (Hons) Civil, USM, 2007  
Years of Experience: 17 years

#### Muhammad Fariz bin Hashim, Senior Traffic Engineer

B.Eng. (Hons) Civil, UiTM, 2012  
Diploma in Engineering (Civil), UiTM, 2009  
Years of Experience: 13 years

#### Wan Nur Aliffa binti Wan Ramli, Transport Planner

M.Sc (Civil - Transportation and Highway), UTM, 2010  
B. Urban and Regional Planning, UTM, 2008  
Years of Experience: 15 years

#### Mohd Shah Ezwan bin Hashim, Traffic Engineer

M.Sc (Transport and Highway Engineering), UPM, 2013  
B.Eng. (Hons) Civil Engineering, UNIMAS, 2011  
Years of Experience: 12 years

#### Hazwaruaida binti Muhammad, Traffic Engineer

M.Sc (Civil Engineering), USM, 2014  
B.Eng. (Hons) Civil, USM, 2010  
Years of Experience: 11 years

#### Raja Zhafri Iskandar bin Raja Rusli, Transport Planner

B. Urban and Regional Planning (Hons), UIAM, 2015  
Years of Experience: 10 years

#### Nik Muhammad Hakim Bin Johari, Traffic Engineer

B.Eng. (Hons) Civil, UPM, 2023  
Years of Experience: 1 year

#### Ainaa Aqilah Binti Kamaruddin, Traffic Engineer

B.Eng. (Hons) Civil, UTM, 2023  
Years of Experience: 1 year

#### Nur Zuriatie Afifah Binti Mohd Zulhri, Traffic Engineer

B.Eng. (Hons) Civil, UiTM, 2023  
Years of Experience: 1 year



### Supporting Staff

#### Margaret Cheong, Senior Secretary

#### Norazizie binti Mohd Naser, Admin Coordinator

#### Nurwahidah Wahid, Account Assistant

#### Jamri bin Kassim, Head Draughtsperson

#### Mohd Fuad bin Abdul Rahman, Senior Surveyor/Draughtsperson

#### Husaini bin Ibrahim, Draughtsperson

#### Mohd Nazri bin Nawi, Surveyor/Draughtsperson

#### Mohd Firdaus bin Mohd Suki, Surveyor/Draughtsperson

#### Mohd Asyraf bin Ibrahim, Office Support/Dispatch

# What's Next?

Traffic and Transport Studies are needed to ensure the vehicular and pedestrian traffic generated from new developments are facilitated with optimal traffic management and transport planning solutions to reduce the traffic impact in the study area.

As an added service, all of our Traffic Studies includes internal carpark circulation studies, swept analysis, and parking boom gate analysis. As needed by some local authorities, 3D traffic micro simulation modelling can also be added as additional scope in the traffic study.

Apart from being a requirement for development planning submissions, traffic consultancy services are also sought after for improvement to traffic circulation, public transport ridership forecast, highway traffic forecast, urban transport masterplans, and other projects where vehicle and pedestrian flow needs to be planned.

Feel free to contact and visit us for more information on the traffic and transport consultancy services that we offer. We will be glad to assist in customising a study scope specific to your project development needs.



**PERUNDING TRAFIK KLASIK SDN. BHD**

(300560-H)

L13A-01-02  
Level 13A PJX HM Shah Tower,  
16A Persiaran Barat,  
46050 Petaling Jaya,  
Selangor Darul Ehsan

Telephone: +603 7932 3266  
Fax: +603 7932 3261

Email: [trafik@ptk.my](mailto:trafik@ptk.my)  
Website: [www.ptk.my](http://www.ptk.my)



**PERUNDING TRAFIK KLASIK SDN. BHD**

(300560-H)